

SEMICONDUCTOR PROCESSING TECHNICIAN

ANNUAL WAGES	HOURLY WAGES	EDUCATION AT ENTRY LEVEL
ENTRY: \$27,400 MEDIAN: \$37,100 HIGH: \$41,300	ENTRY: \$13.15 MEDIAN: \$17.86 HIGH: \$19.86	HIGH SCHOOL DIPLOMA/EQUIVALENT AND ON THE JOB TRAINING

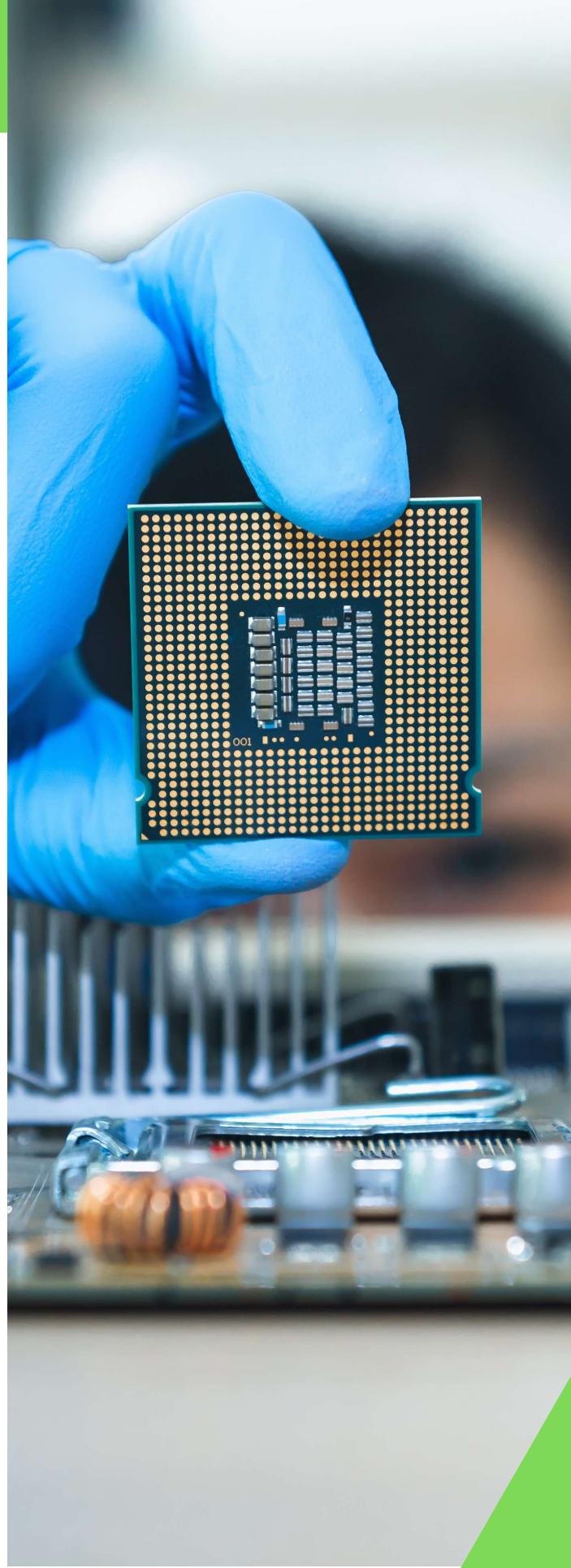
 THE AUSTIN MSA PROJECTS TO NEED OVER **2,155 SEMICONDUCTOR PROCESSING TECHNICIANS BY 2031**. WILL YOU BE ONE?

JOB DUTIES

- Manipulate valves, switches, and buttons, or key commands into control panels to start semiconductor processing cycles.
- Maintain processing, production, and inspection information and reports.
- Inspect materials, components, or products for surface defects and measure circuitry, using electronic test equipment, precision measuring instruments, microscope, and standard procedures.

YOU WILL THRIVE IN THIS POSITION IF...

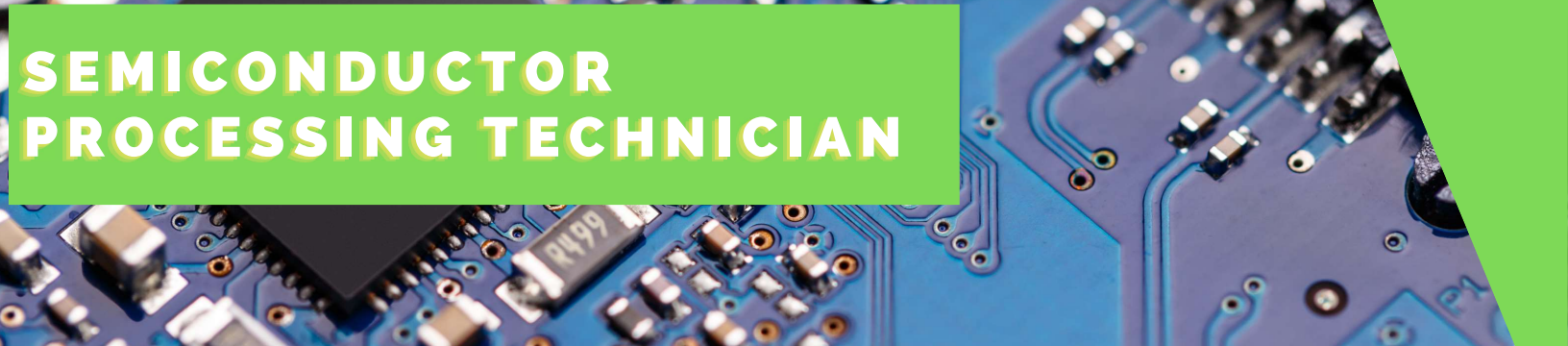
- You like activities that include practical, hands-on problem solving and solutions.
- You like thinking of pros and cons of different ways to solve a problem.
- You have an attention to detail and a stress tolerance.



SCAN TO WATCH A VIDEO ABOUT MANUFACTURING IN AUSTIN

Data Sources
SOC: 51-91410 Net, JobsEq, 2022
Video from ARMA

Prepared by Workforce Solutions Capital Area
A proud partner of the American Job Center Network. Workforce Solutions Capital Area is an equal opportunity employer/program. Auxiliary aids and services are available, upon request, to persons with disabilities. Relay Texas: 1.800.735.2969 (TDD) / 711 (Voice).



SEMICONDUCTOR PROCESSING TECHNICIAN

HOW TO GET STARTED IN THIS CAREER PATHWAY



Enroll in engineering, technology, english, and government classes.



Complete an informational interview with a professional in this career pathway

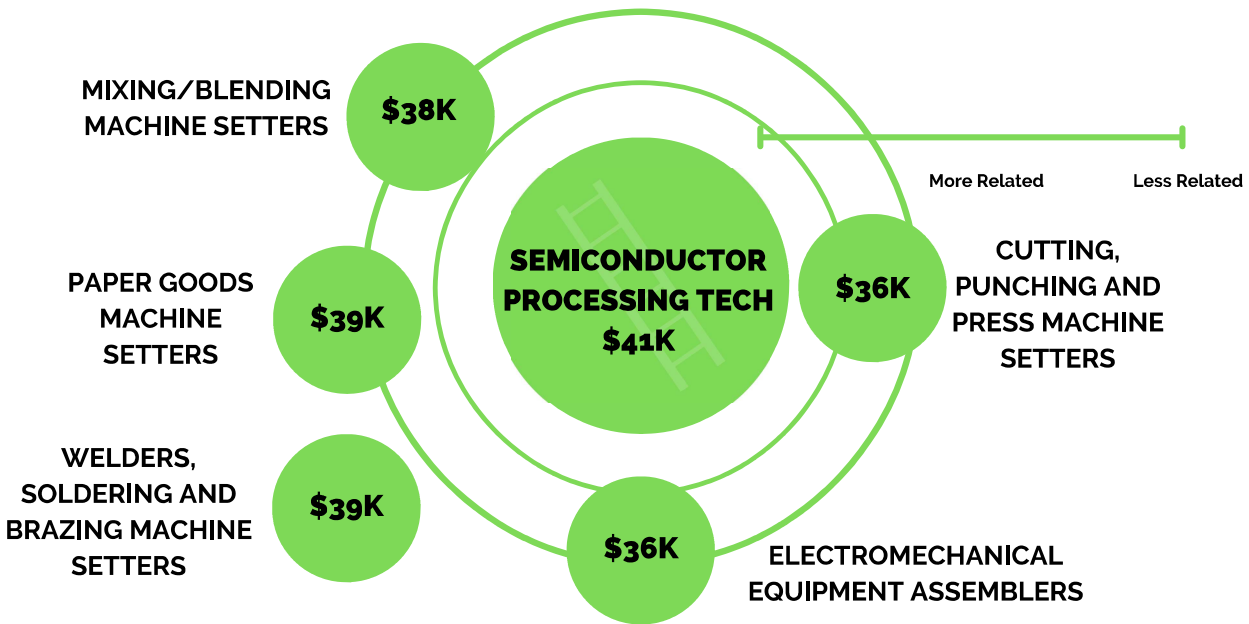


Gain experience in an entry-level role. **Apply at workintexas.com**



Complete a personality test or explore more high-demand careers. **Scan the code to get started!**

RELATED JOBS WITH MEDIAN SALARY



WHAT IS SOMETHING NEW YOU LEARNED ABOUT THIS CAREER?

Data Sources
 SOC: 51-9041
 O'Net, JobsEq, 2021
 Labor Insight - Burning Glass Technologies

Prepared by Workforce Solutions Capital Area
 A proud partner of the American Job Center Network. Workforce Solutions Capital Area is an equal opportunity employer/program. Auxiliary aids and services are available, upon request, to persons with disabilities. Relay Texas: 1.800.735.2969 (TDD) / 711 (Voice).